

EvoDrive+ AUTOMATIC SLIDING DOORS FOR INTERIORS

MOTION4
DOORS



MOTION4 is a company specialized in the development, design and production of automatic sliding doors with innovative magnetic linear motor technology for home, residential and commercial use.

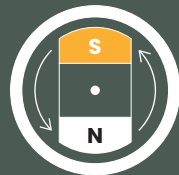
Based in Barcelona, Spain, Linear Motor Applications, S.L. (LMA) was established in 2008 with the strong belief that in the near future the automation of doors, windows and other similar applications will be based in this advanced technology.

MOTION4

2

Autodoors re-defined

CONVENTIONAL MOTOR



LINEAR MOTOR



The **EvoDrive+** is a redefinition of the traditional automatic door operator.

MOTION4 has developed a unique **magnetic linear motor** that uses an electrically powered motor that instead of rotating, it produces a linear force using magnetic fields to create thrust and movement.

This reduces the number of mechanical parts required, which results in a very compact and stylish **60 x 70 mm** aluminium housing, a **quieter and smoother** motion and a longer lifespan, combining the **compact size** of a manual door track, with the **performance** and convenience of a normal automatic sliding door.



Aesthetic Design

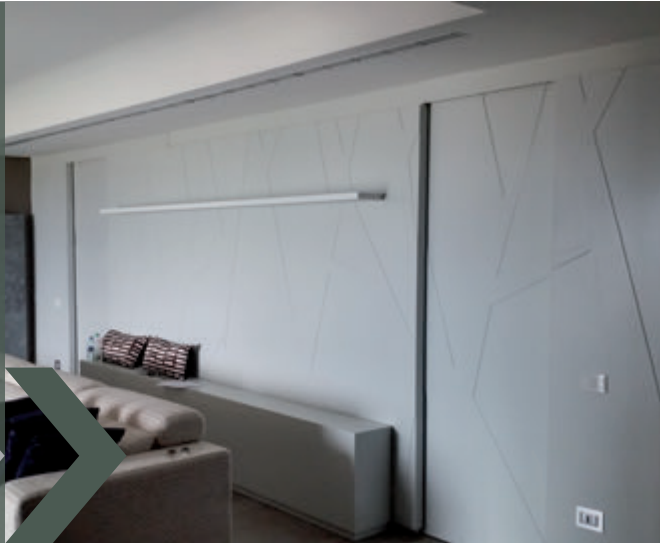
Housed compactly in a sleek aluminium casing that measures only 60 mm x 70 mm in cross-sectional area, the reduced dimensions of the **EvoDrive+** takes up a fraction of any other traditional automatic door operator. Its elegant unobtrusive design also allows users to enjoy the safety and convenience of having an automatic entrance without compromising on aesthetics.



Silence in Motion

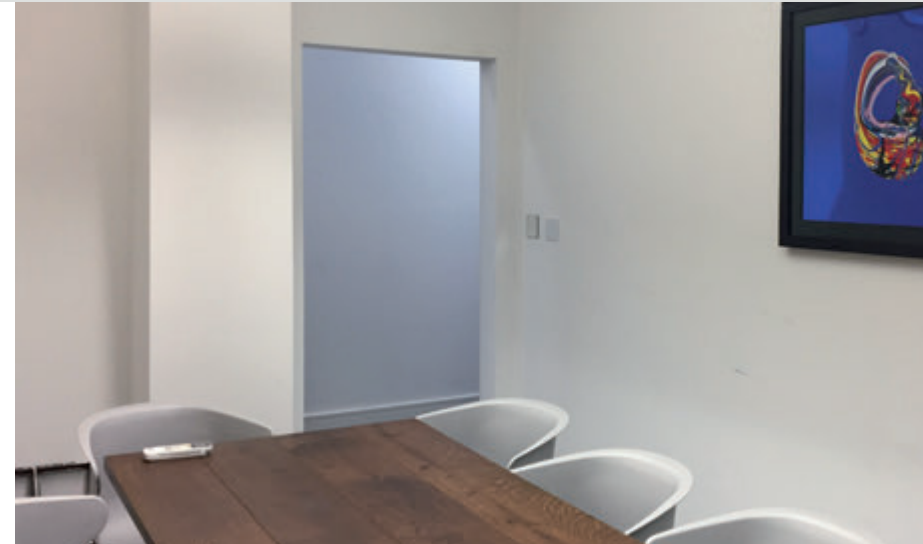
Powered by magnetic fields rather than mechanical action, the friction is dramatically reduced, which results in a smooth and silent movement. This makes the **EvoDrive+** the ideal automatic door for use in private residences, hotels, care homes and other internal applications where a silent environment is required.

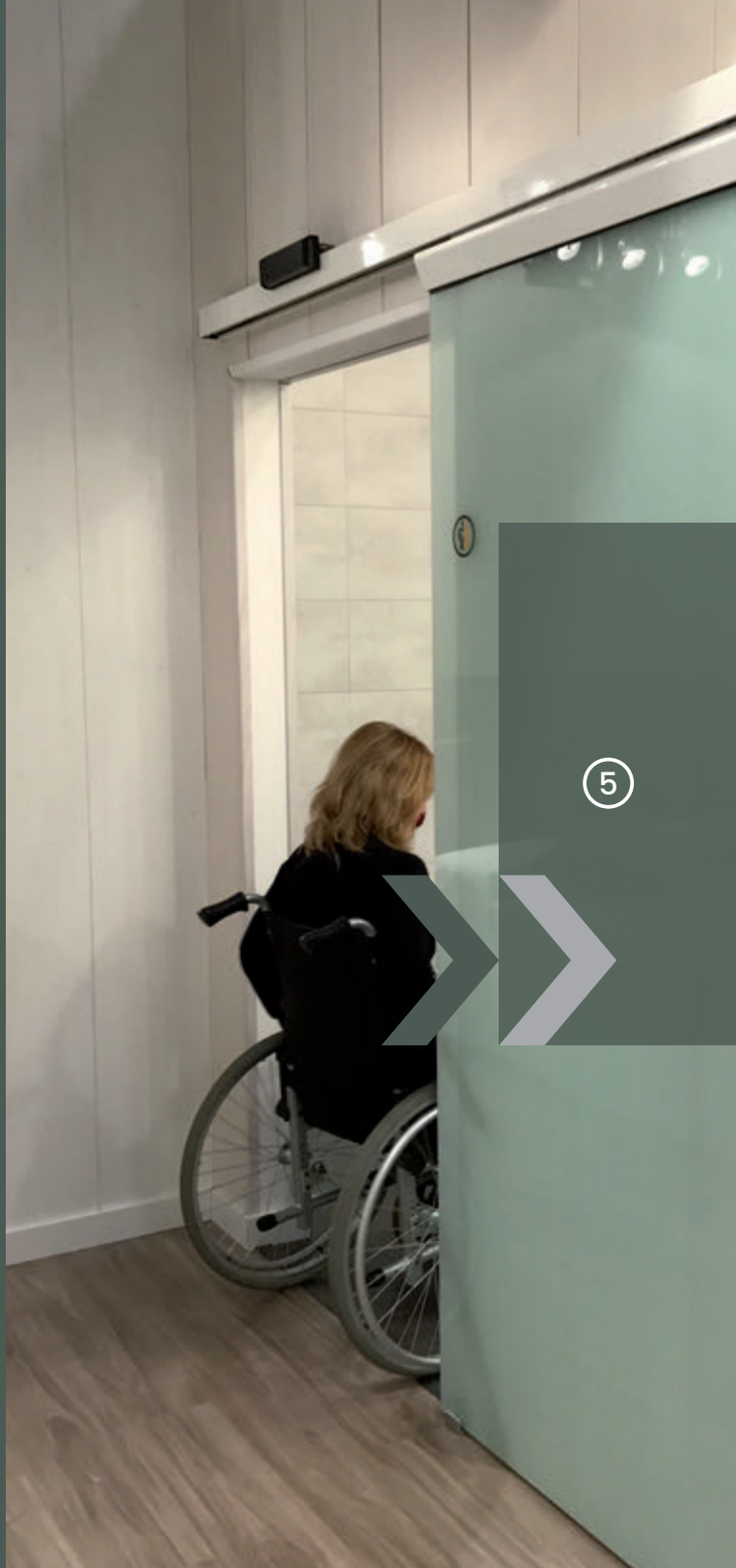
4



Enhanced Safety

The **EvoDrive+** is highly sensitive to resistance and obstacles. It can be connected to a wide variety of safety sensors and activation devices, or even set the door in low energy mode. The operator complies with all regulations in force, including European Standard EN16005 "Power operated pedestrian doorsets".





Low Maintenance

The absence of belts, pulleys, reduction gears and other mechanical elements commonly used in traditional automatic doors, reduces the need for frequent maintenance and replacement parts. The **EvoDrive+** is easy to install and commission, and will operate for its entire life at a very reduced maintenance cost.



Highly Versatile

The **EvoDrive+** is so small and compact that it pairs stylishly with a variety of materials, ranging from glass to aluminium or timber, integrating perfectly in any kind of environment. A piece of architecture for creative minds.

6



Variety of Applications

The discreet and elegant look of the **EvoDrive+** combined with its silent movement, will fit in any project, such as:

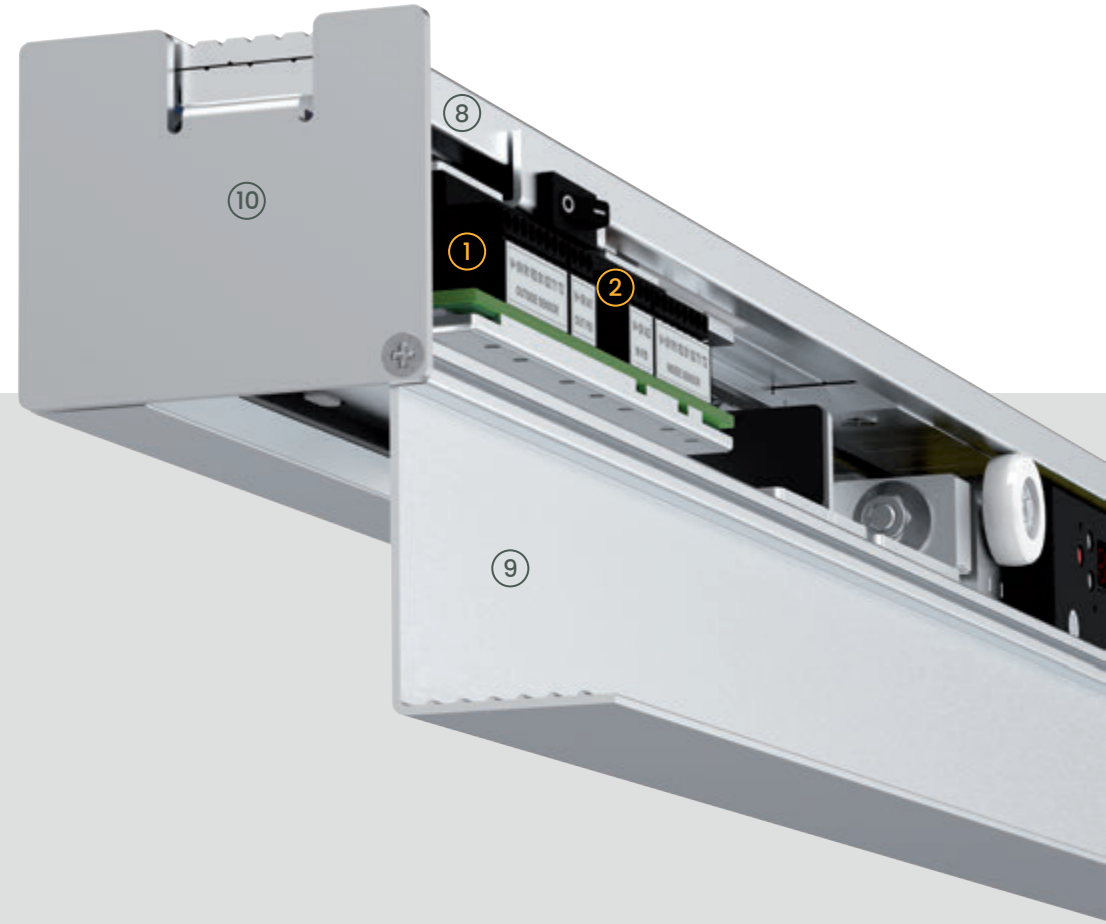
- HOTELS
- PRIVATE HOMES
- OFFICE PARTITIONS
- HOSPITALS
- CARE HOMES
- RESTAURANTS
- AIRPORTS
- SMOKING ROOMS





8

1. POWER SUPPLY: 110 - 230 V AC 50-60 Hz
2. INPUT/OUTPUT MODULE - MASTER
3. LEAF TROLLEYS
4. LINEAR MOTOR
5. MAGNETS
6. MOTOR DRIVER
7. PARAMETER SETTING
8. ALUMINIUM HOUSING
9. ALUMINIUM COVER
10. SIDE COVERS



Conform to European Norms and Directives in Force

- **Directive 2006/42/EC:** "Machinery Directive"
- **Directive 2014/30/EU:** "Electromagnetic Compatibility (EMC)"
- **Directive 2014/35/EU:** "Low Voltage Directive (LVD)"
- **EN 16005:2013/AC:2015:** "Power operated pedestrian doorsets"

Adjustable Parameters

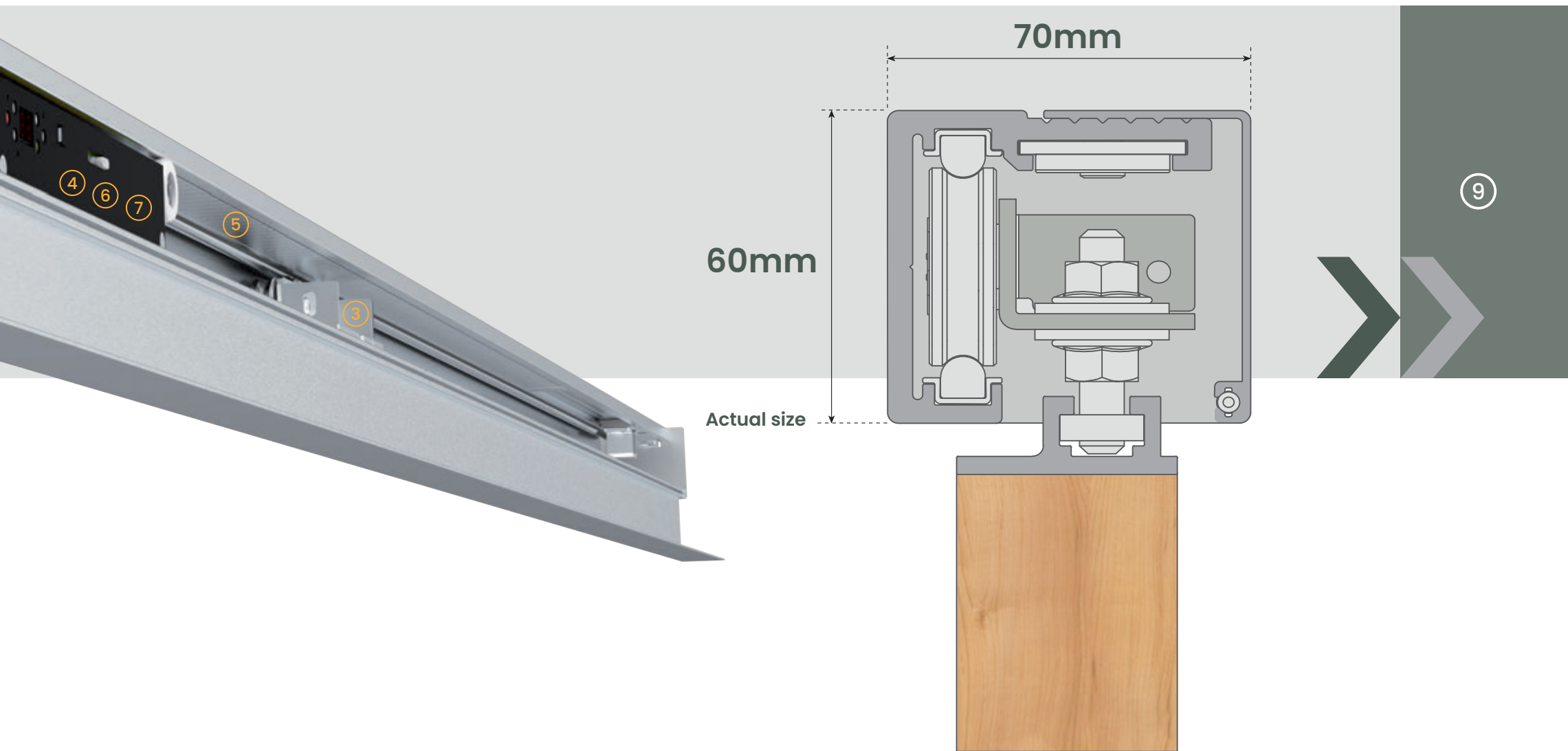
- Opening Direction: Right or Left
- Low Energy or Normal Mode
- Opening Speed
- Closing Speed
- Hold Open Time
- Push & Go
- Push to Open / Push to Close
- Reduced Opening

Main Technical Features

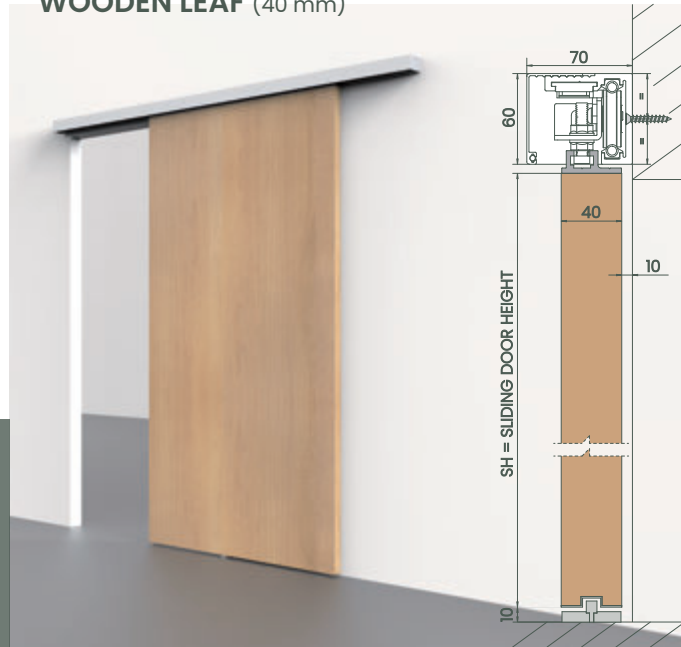
- **Compact Aluminium Housing:** 60x70 mm
- **Minimum Clear Opening:** 750 mm (Drive length: 1.550 mm)
- **Maximum Clear Opening:** 1.400 mm (Drive length: 2.850 mm)
- **Leaf Weight:** Up to 80 Kg
- **Adjustable Opening Speed:** 200 to 600 mm/s
- **Adjustable Acceleration and Braking Curves:** 200 to 800 mm/s²
- **Low Operating Noise:** <50 dB
- **Power Supply:** 230/110 V AC 50-60 Hz
- **Power Consumption:** In operation 80 W / Peaks (0,5 sec) 180 W / Stand-by 4 W

Motor Technical Features

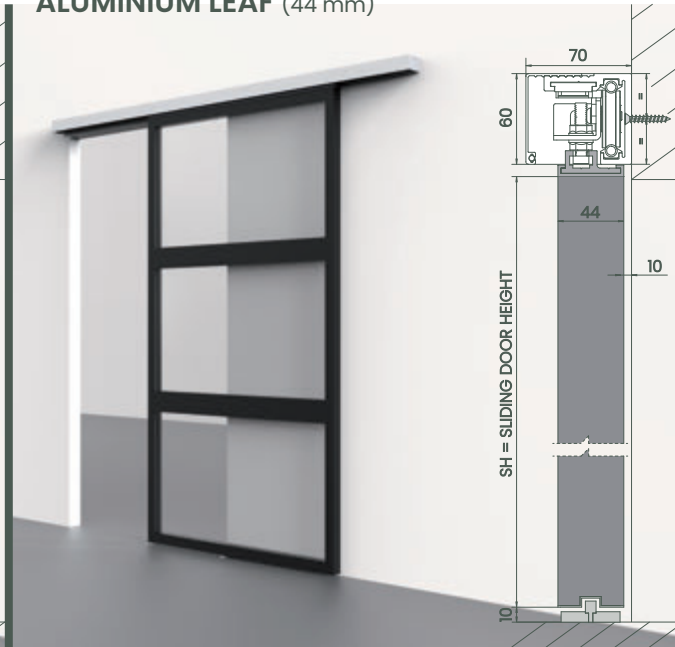
- **Electric three phase AC motor:** Type LSMPM - (Linear Synchronous Motor with Permanent Magnets)
- **Tension:** 24 V DC
- **Peak current:** 7 A
- **Operating current:** 3 A
- **Motor driver:**
 - Magnetic position feedback with 3 hall cells
 - Motion control by means of a driver with field oriented control (FOC)
 - Wireless communication via Bluetooth



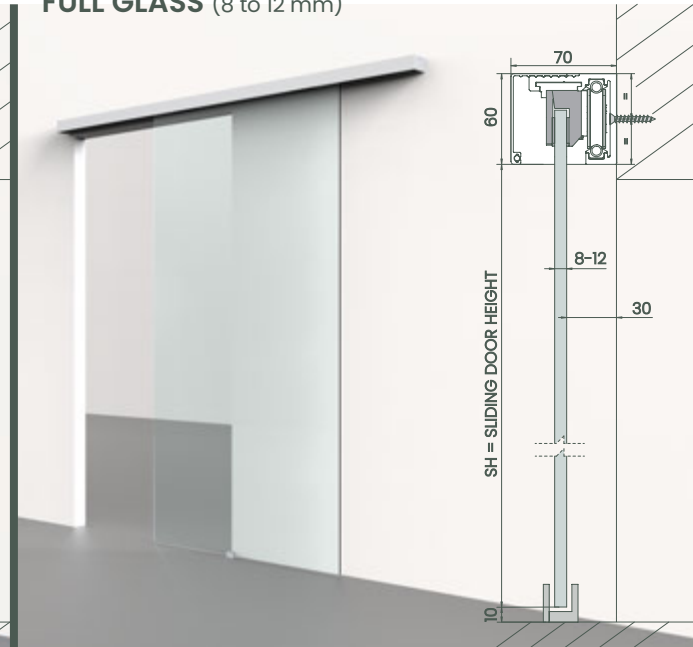
WOODEN LEAF (40 mm)



ALUMINIUM LEAF (44 mm)

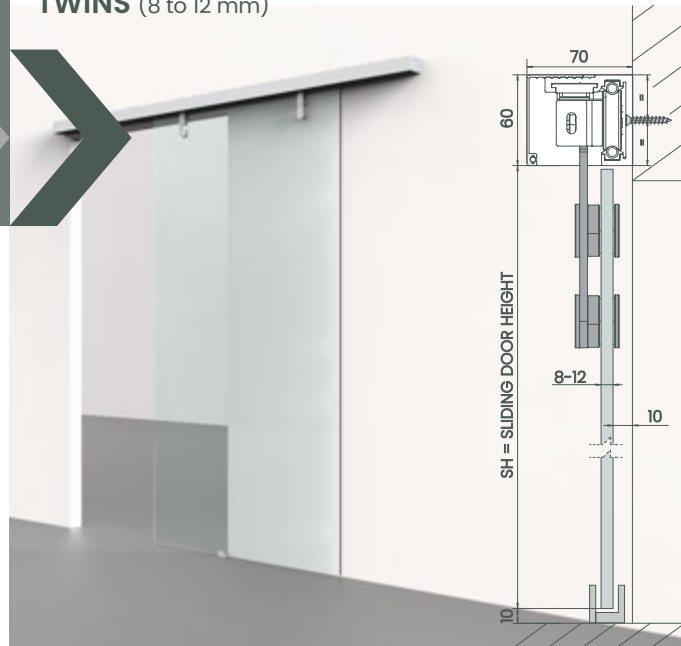


FULL GLASS (8 to 12 mm)

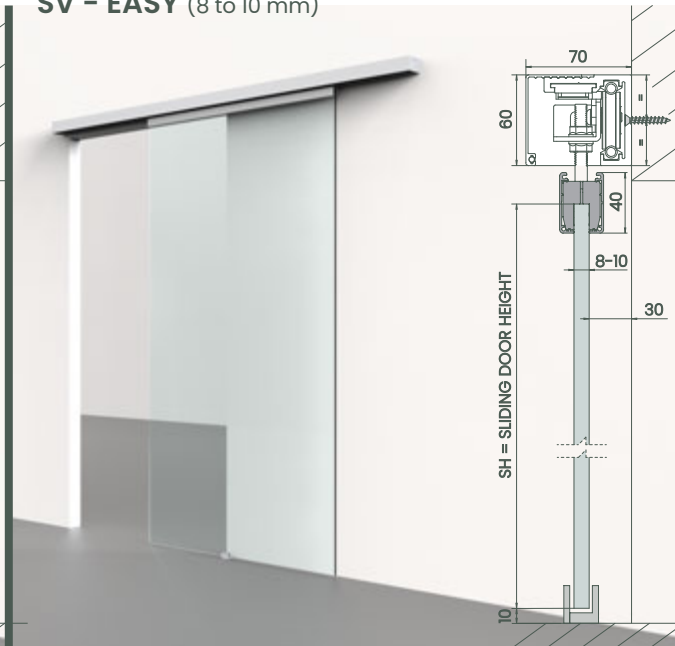


10

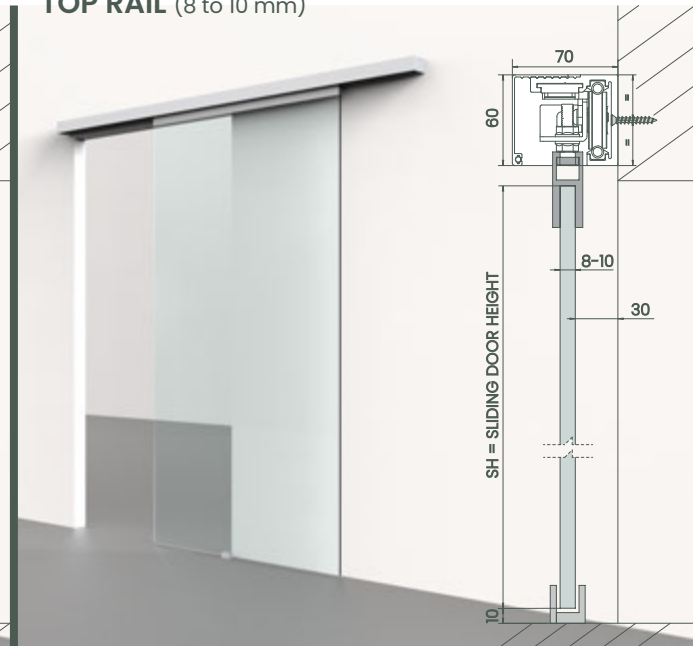
TWINS (8 to 12 mm)



SV - EASY (8 to 10 mm)



TOP RAIL (8 to 10 mm)





1. INFRARED SENSOR

When the sensor detects presence or movement, the door activates. It can also be used as a safety device.



2. AUTOMATIC LOCK

Blocks the door when the leaf is in closed position and the operating mode is in Closed or Exit Only mode.



3. TOUCH-LESS SWITCH

The door opens and closes by simply approaching your hand or elbow to the device.



4. PUSH BUTTON

Press to open and close the door. Optionally, press to open, and press a second time to close.



5. REMOTE CONTROL

Four operating modes: Auto / Open / Close / Exit Only
Receiver incorporated in the main control board
Pocked size transmitter - 12V DC battery.



6. PUSH&GO

Push the leaf or the door handle, and the door will open automatically. Push-to-open & Push-to-close also available.

Hotel ABBA – San Sebastián

Silk Restaurant – Madrid

Dubai Airport T2

Public Toilet Door System

We offer a customized solution for public toilets in restaurants, hotels, airports, etc. The **EvoDrive+** can be connected to a wide range of sensors and indicators for a user friendly and touch-less experience, to improve hygiene and to help reducing the spread of virus.

» BASIC VERSION

Outside



Activates the door to open

Inside



1. Locks the door when closed
2. Unlocks and opens the door to exit

» COMFORT VERSION

Outside



Activates the door to open



Free / Vacant light indicator

Inside



Locks / Unlocks Opens the door

» OPTIONAL

Safety Sensor



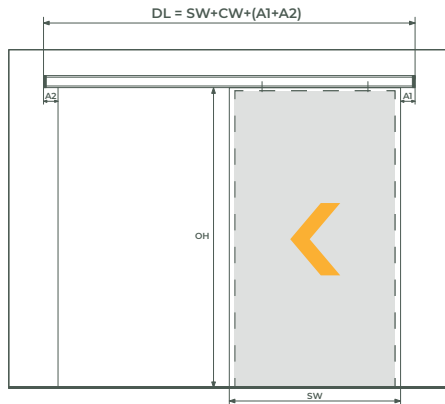
Keeps the door open when someone stands on the pathway

Key Switch

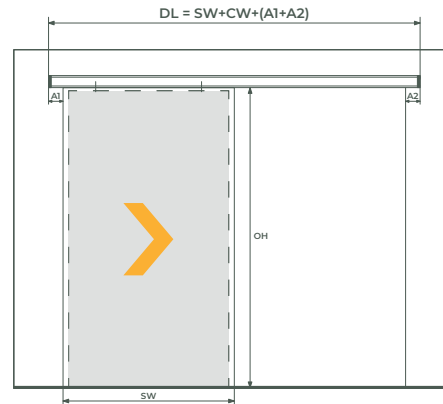


Unlocks and opens the door from outside on an emergency

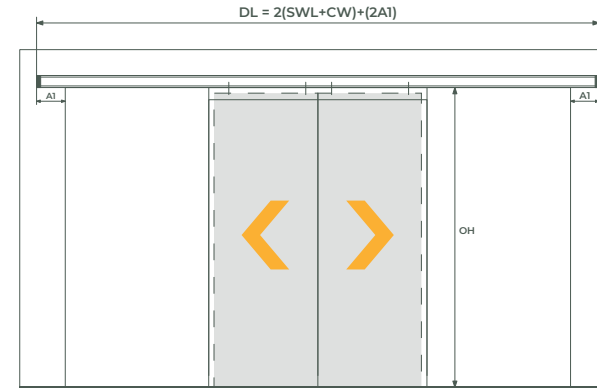
EvoDrive+ Left Side Opening



EvoDrive+ Right Side Opening

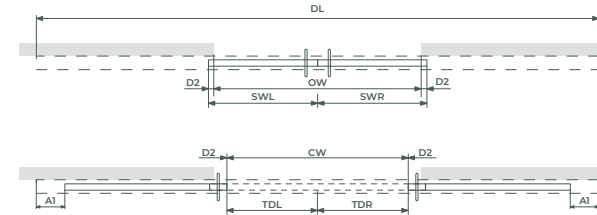
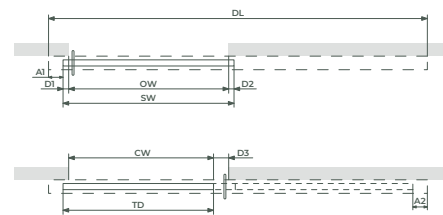
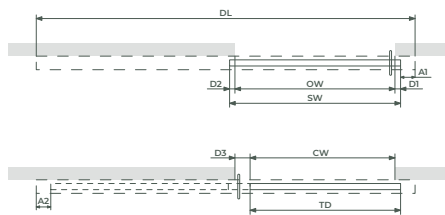


EvoDrive+ Bi-part Opening



LEGEND

DL Drive Length
OH Opening Height
OW Opening Width
CW Clear Width
SW Width of Sliding Leaf
TD Travelling Distance
D1/D2 Overlap
D3 Finger Trap Protection
A1/A2 Header extension



Part Numbers

TYPES OF OPERATORS AND ACCESSORIES

61013121R	EvoDrive automatic sliding door operator, single slide. Right opening
61013121L	EvoDrive automatic sliding door operator, single slide. Left opening
61023121	EvoDrive automatic sliding door operator, double-leaf
69620004	Automatic lock, fail-safe
69111005	Remote control with 4 operating modes (additional units)

ACTIVATION AND SAFETY DEVICES

69360001	Touch-less switch
69131010	Wireless push button (white)
69330004	Activation and safety IR+MW sensor, OAM-DUAL T
69320001	Activation and safety IR sensor, OA-203C

LEAF ADAPTORS

67630001	TIMBER leaf adaptor for 40 wooden leaf, with floor guide
67640001	ALUMINIUM leaf adaptor for 45 mm frame
67622000	TOP RAIL leaf adaptor for 8-10 mm glass, with floor guide
67625002	FULL GLASS leaf adaptor for 8-12 mm glass, with floor guide
67625003	TWINS leaf adaptor for 8-12 mm glass, with floor guide
67625004	SV-EASY leaf adaptor. Clamps for 8 mm glass, with cover
67625005	SV-EASY leaf adaptor. Clamps for 10 mm glass, with cover

ACCESSORIES FOR TOILET MODE

69150001	BASIC toilet mode kit: 2 touch-less switches and I/O interface
69150002	COMFORT toilet mode kit: 3 touch-less switches, light indicator and I/O interface
69600001	Key switch





The logo for MOTION4, with 'MOTION' in white and '4' in orange, is positioned in the upper left of a dark green rectangular area. A white chevron arrow points to the right from the bottom left corner of this area.

MOTION4

Version M4D-2204EN. Linear Motor Applications SL reserves the right to modify or develop the product described herein, without previous advice. Therefore, the drawings, descriptions and data contained in this catalogue must not be considered as a contractual obligation, but only indicative.

Integrated Access Limited • Hammerain House • Hookstone Avenue • Harrogate • HG2 8ER
T: 01423 561271 • E: enquiries@integratedaccess.co.uk • W: www.integratedaccess.co.uk
Company Registration Number: 07413503 Registered in England