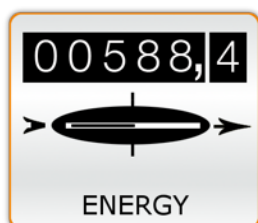
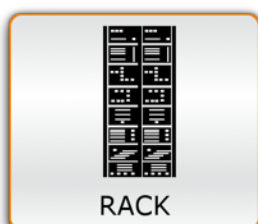


The superior IT-rack monitoring

The KENTIX MultiSensor-RACK with integrated PDU



Surveillance and monitoring of all risks in the IT rack with integrated PDU and power consumption measurement



- Early detection of all risks in IT-racks ■
- Realtime alarming via E-Mail or SNMP ■
- Power Distribution Unit (PDU) for 12 devices ■
- Configuration and operation via build in web-server ■
- Expandable with Kentix AlarmManager-PRO ■

The KENTIX MultiSensor, a device that detects all threats in IT-racks!



Functions	Sensors
HTTP	THERMO
BUZZER	HUMIDITY
RACK	DEW POINT
SNMP E-MAIL	BRAND
BILLING	MOTION
PDU	ENERGY
MONITOR	EXT. IN - OUT

Function	All-in-one sensor system with PDU, LAN connection and build-in Web server. For stand-alone application with e-mail alerts, or in conjunction with a network monitoring system via SNMP.
Expansion	Connection to Kentix AlarmManager-PRO
Chassis	IT-Rack 1 HE (44mm), 19" mounting brackets dimensions: 418 x 165 x 44 mm (B x T x H)
Configuration	Build-in Web-Server (HTTP/HTTPS)
Protocols	HTTP, HTTPS, FTP, DNS, DHCP, NTP, ESMTMP, SNMP V1/2
Messaging - Data	E-Mail (ESMTMP) with authentication, up to 5 recipients SNMP V2 Traps (thresholds, coldstart, login) SNMP SET/GET, read/write of measurement values (MIB download) Web-Service (XML-Daten) SMS alarming with AlarmManager-PRO
Temperature	0 bis 99°C measurement range
Humidity	0 bis 100% measurement range
Dewpoint	Dewpoint calculation from temperature and humidity
Fire detection (CO)	Carbon monoxide measurement >10ppm, configurable threshold from ca. 10 - 200ppm für early fire detection
Motion	Vibration sensor with configurable sensitivity
Signalling	Integrated buzzer with 85dB/1m, 2,3kHz
Connections	LAN 10/100MBit (IP V4/V6) Kentix system jack (2 Stck) for external modules like leakage-sensors or door-contact
Power measurement	Voltage (V), current (A), power (W), consumption (kWh), active power factor, cost per kWh, consumption total/month
Monitoring	Data recording temp/hum/dewpoint and graphical visualization Data recording of power, consumption in 15 minute resolution
Display	OLED display for alarms and realtime measurement values LEDs for ALARM and RUN display
Power	100-250AC/16A, power consumption ca. 4W Optional with A-B feed supply
PDU	12 socket outlets (IEC 60320, 10A) with cable strain relief Maximal power distribution 4.600Watt with A+B supply Switchable socket outlets (2 outlet banks with timer/reset function)
Content of delivery	2 pc. Power cords, 19" mounting brackets
Order-No.	KMS-RACK