

A new generation of covers ready for mounting on all emergency door and window handles.

ExitHandleShield is an economical alternative for door and window security and is ideal for protecting exit doors and escape window handles.

The cover is installed over the handle of an emergency exit to prevent it from being used accidentally. The handle cannot be accessed without intentionally knocking off the cover.

In case of an emergency the cover can be easily removed, with no risk of injury because of our patented closure system, enabling access to the door or window handle.

Each cover is constructed of a hard shatterproof acrylic plastic and is reusable. A warning sticker on the cover explains the proper use of the cover

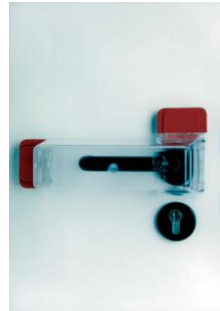


PRODUCT INFORMATION



Type F & Type F2

Suitable for door knobs with a maximum height of 57mm. Type F2 has only one fastening latch for fitment in awkward positions



Type S

Suitable for securing all standard inset fittings in sports halls (such as FSB and Hagri). In addition emergency call points can also be secured

Type D2 & Type E

For use on standard or narrow door frames



Type K

Designed to secure door handles and has 4 mounting options for optimum fitment



The patented mounting clip consists of a security seal with a perforated breaking point and a red-green identification label. When used, the seal comes apart at its breaking point. A new red seal is all that is then needed to re-secure the cover.

The battery powered CoverShield can be installed to the mounting clip of any ExitHandleShield and triggers a 75dB/1m acoustic alarm if the cover is knocked off

